

# SHARP®

## ENHANCED PRODUCTIVITY AT YOUR FINGERTIPS



MX-4100N  
MX-4101N  
MX-5001N



"Pick of the Year"  
Award 2009



"5 Stars Exceptional"  
Award 2009



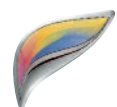
"Editor's Choice"  
Award 2009



"Outstanding Achievement  
for Innovation" Award 2008



"Best Digital Imaging  
Product Line" Award 2008



THE RENAISSANCE OF COLOR

## MX-4100N/4101N/5001N

Precision engineered to help increase workflow efficiency and provide exceptional image quality, Sharp's new MX-4100N/4101N/5001N color document systems take you to the next level in MFP performance and productivity. A large, **high resolution touch-screen color display** with **graphical menu navigation** and a **full-size retractable keyboard** to simplify data entry are just two of the many advanced features offered by these new models. The powerful 800 MHz true multi-tasking



controller enables MX-4100N/4101N/5001N users to save time and money while producing professional color documents in-house—**amazing image quality** that is also economical. Sharp's advanced device management makes it easy to **control color usage and costs**. With the latest **Sharp OSA®** development platform built into each MX-4100N/4101N/5001N system, integration with network application has never been easier. And, to safeguard the confidentiality of your intellectual property, Sharp's industry leading security suite is second to none.



Sharp's new MX document systems are fully loaded with advanced features to enhance productivity and improve document workflow

## ENGINEERED FOR PERFORMANCE

FLEXIBILITY  
PRODUCTIVITY  
INTEGRATION  
USER-FRIENDLY



- Powerful 800 MHz **true multi-tasking** full-color document system
- Large, **high resolution touch-screen** color display with graphical navigation
- Advanced second generation micro-fine toner technology offers crisp, **high quality images** page after page
- Standard 150-sheet duplex single pass document feeder with color **Scan<sup>2</sup>**™ is available with the MX-4101N and MX-5001N
- **1200 x 1200 dpi** printing provides clear, crisp images, even on jobs with fine detail
- Network interface supports **gigabit ethernet**
- Industry leading **ImageSEND™** function scans documents to USB devices, network folders, e-mail and more
- Robust 38GB **document filing system** with **thumbnail view** and **image preview** features
- Network ready PCL<sup>®</sup>6/PCL5c **printing system** with **direct print** function and available Postscript<sup>®</sup> 3™ and Windows<sup>®</sup> XPS options
- Supports the latest Sharp OSA development platform, enabling businesses to streamline document workflow and **enhance productivity** faster and easier than ever before\*
- ImageSEND function scans documents at up to **70 images per minute** in both black and color (MX-4101N/5001N)
- **Flexible paper handling** system feeds up to 110 lb index through the paper trays and up to 140 lb index through the bypass tray
- On-board paper storage capacity for **up to 5,600 sheets** with options
- **Super G3 fax** option with intelligent inbound routing
- Supports Sharp's latest **award-winning** multi-level document and network **security suite**, which conforms to the new **IEEE-2600™- 2008 security standard** for MFP devices\*
- Advanced **web-based device management** offers both administrator level and user level login control
- New **remote front panel feature** allows users and administrators to view and control machine operations from a PC workstation\*
- **Environmentally friendly design** offers low power consumption, long-life parts and is supported by Sharp's toner recycling program

\* Some features require optional equipment.



## POWERFUL PERFORMANCE

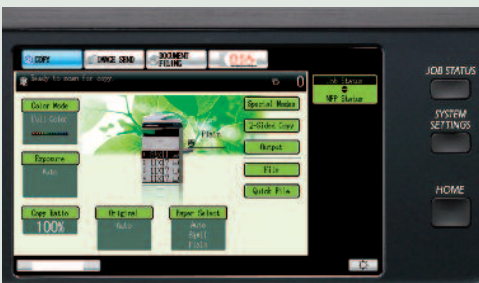


Standard retractable keyboard makes data entry quick and easy.

Get on the fast track in today's competitive business environment with Sharp's powerful MX color document systems

### Award-winning Retractable Keyboard Offers Added Convenience

For workgroups that perform a significant amount of data entry, the new MX-4100N/4101N/5001N color workgroup document systems include a standard retractable keyboard. Designed to simplify e-mail address and subject line entries, as well as repetitive scanning tasks and user authentication, the built-in keyboard offers users a familiar ergonomic interface.



Large 8.5" (diagonally measured), high-resolution touch-screen display.

### The Flexibility and Performance You Need

With a new 8.5" (diagonally measured) **high-resolution touch-screen color display** and a powerful 800 MHz **multi-tasking controller**, the new MX-4100N/4101N/5001N color workgroup document systems can help elevate your office productivity to the next level. The intuitive menu navigation system with razor-sharp graphics makes operating the MX simple and easy. With Sharp's true multi-tasking controller, complex color print jobs can be processed quickly, even while documents are being scanned. But that's just the beginning— with a **standard 150-sheet dual-head scanning document feeder** (MX-4101N/5001N models), automatic duplexing, electronic sorting and integrated offset stacking, you'll complete even large jobs in a snap.

### High Quality Output You Can Rely On

The new MX-4100N/4101N/5001N color workgroup document systems combine Sharp's second generation micro-fine toner technology with **1200 x 1200 dpi** print resolution to produce documents with crisp, clear images and dazzling high quality colors. Sharp's **Advanced Image Stabilization** system helps ensure uniform density and color balance for beautiful output page after page.



On-line paper capacity stores up to 5,600 sheets with options.

### Reliability Your Business Can Depend On

Sharp's MX color workgroup document systems deliver professional performance and optimal productivity to satisfy your daily production needs. Copy/print **speeds up to 41 ppm and 50 ppm** respectively (in both color or B&W) help you to meet project deadlines with time to spare. The flexible paper handling system can feed up to 110 lb index stock through the paper trays and up to 140 lb index through the bypass tray. With available on-line paper capacity of up to 5,600 sheets, the MX-4100N/4101N/5001N is ready when you are.



For high optimum productivity, Sharp offers award-winning Color Scan<sup>2</sup> technology.

## Innovative, user-friendly features help increase document workflow efficiency and productivity to optimize day-to-day operations

### Speed up your Workflow with Sharp's Innovative Color Scan<sup>2</sup> technology

Sharp's advanced 150-sheet document feeder with dual reading heads can scan 2-sided documents in a single pass, dramatically improving productivity and reliability (standard on MX-4101N/5001N). Now you can process even large-scale jobs with incredible efficiency.



USB 2.0 port is located on the front panel of the machine for easy access.

### A True Multi-Tasking Document System

The new MX-4100N/4101N/5001N feature a **high-performance, 800 MHz multi-tasking controller** that delivers copy, fax and print jobs continuously for optimum efficiency. Other controllers only perform one operation at a time. But the MX Series continually processes incoming jobs even while existing jobs are output. The result? A workflow that virtually never slows down—even at crunch time.

### Direct USB Printing Adds Convenience and Portability

With Direct USB printing, users can print color or B&W files in a variety of popular formats directly from USB memory devices such as a ThumbDrive™ or ClipDrive™.\* Need to print PDF brochures in a hurry for a big meeting? It's easy with the MX Color Series, just plug in your portable USB memory device, select the file, and your job prints immediately.

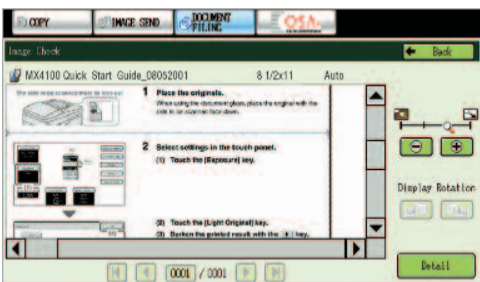


Sharp's easy-to-use document filing system with thumbnail preview.

### Innovative Document Filing

Sharp's easy-to-use **Document Filing System** provides up to 38GB of hard drive space to store frequently used files such as forms, reports and other commonly used documents for printing and distribution. Plus, with private storage features and **PIN-code access**, you can store sensitive documents securely. And, with Sharp's **Quick File Folder**, you can temporarily store documents with fast, one-touch simplicity. An easy-to-use backup system helps ensure your files are safe.

To make managing all of your stored jobs simple, the MX touch-screen display offers an intuitive **thumbnail view** to allow walk-up users to easily locate stored jobs even if they don't know the filename. For added convenience, an advanced **Image Check** feature allows selected files to be previewed on-screen—walk-up users can even zoom in, change print attributes or move a file to another folder. With storage capacity for up to 5,500 pages, your business can improve document workflow significantly.



Sharp's Image Check feature allows users to preview stored documents at the device.

### Get Professional Results with Advanced Finishing

The MX-4100N/4101N/5001N offers a choice of three high-performance finishers that can always give your documents a professional look and feel. You can save time and money by minimizing outsourced color jobs such as proposals, presentations or newsletters. Choose from a compact inner finisher, a floor-standing saddle-stitch finisher or a large capacity 4K stacking finisher. All three models offer three-position stapling and an available 3-hole punch.



MX-5001N with 4K stacking finisher and punch unit



MX-5001N with saddle stitch finisher



MX-5001N with compact inner finisher

\*Some features require optional equipment.

## A SPECTRUM OF VERSATILE PRINT FEATURES

### Robust, easy-to-use print drivers help maximize document workflow efficiency in any business environment

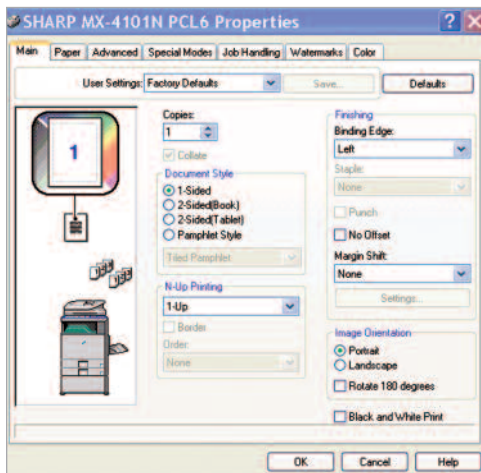
#### Exceptional Print Quality with Professional Output

With the new MX-4100N/4101N/5001N, your business can produce brilliant, high quality color documents, as well as razor-sharp B&W documents. Plus, with **1200 x 1200 dpi resolution**, even documents with fine detail will look great! Sharp's easy-to-use print drivers allow users to set up even complex jobs with just a few mouse clicks. Simple plug-n-play operation makes it easy to take advantage of advanced feature sets in a snap. Special functions like Tab Paper Print, Chapter Inserts and Carbon Copy Print allow you to quickly produce a variety of document types.

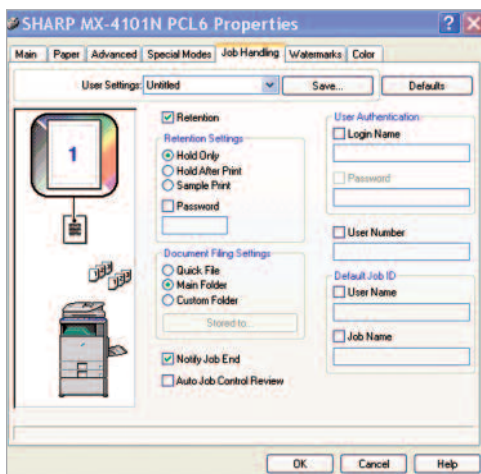
The **optional Postscript driver** delivers extensive color control options, so you can manage color consistency right from your desktop. Combine all this with powerful finishing features that include three-position stapling for up to 50 sheets, saddle stitch finishing for up to 15 ledger size pages and three-hole punching.\* Now you can produce professional quality documents from your desktop that look so good, everyone will think you had them sent out to a printer.

#### Advanced Job Retention Features Enhance Productivity

Sharp's innovative printing system makes it easy for any business to store and archive print jobs. With the ability to retain jobs on the MX hard drive, documents can be stored and reprinted again and again by walk-up users or through the **embedded web page**. Print jobs can even be sent to the MX for archiving without printing them! Need to store sensitive documents? No problem, users can assign a password right from the print driver or from the MX operation panel!



Sharp's intuitive print drivers make accessing all of the MX print features quick and easy.



With Sharp's advanced job handling features, users can easily retain print jobs on the MX hard drive for reprinting at a later date.



\* Some features require optional equipment.



## FLEXIBLE DOCUMENT DISTRIBUTION

With today's fast-moving business environment, you need every advantage you can get—Sharp's MX color document systems give you the edge



### Integrated Network Scanning

With Sharp's powerful **ImageSend** technology, you get one-touch distribution features that centralize document workflow, reduce mail costs and save time. With up to **seven destinations**—E-mail, Desktop, FTP, Network Folders (SMB), USB, Fax and Internet Fax—getting your document where it needs to go is as easy as pushing a button. High-volume workgroups will appreciate the **Send to Group** mode that allows you to mix group broadcast to E-mail, Fax, and Internet Fax for increased efficiency.\*

### Convenient E-mail Distribution

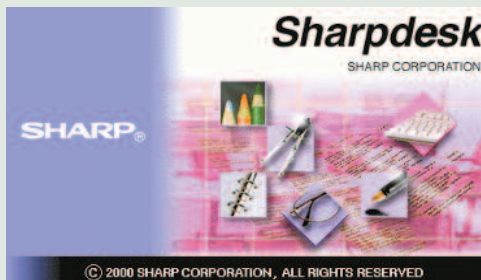
With Lightweight Directory Access Protocol (LDAP), there's no need to manually enter a recipient's complete e-mail address. Simply enter the first few characters and the MX automatically searches and displays a list of matching names. **Unique File Naming** allows users to enter specific file names with custom subject fields, so it's easier than ever to recall files when you need them. And, with **Sharpdesk**® personal document management software, users can easily organize their scanned documents and integrate them into everyday workflow.

### Sharpdesk for Total Document Management

Powerful, flexible and intuitive, Sharpdesk personal document management software enables you to easily manage all of your scanned documents. Easy-to-use tools help you organize, edit, even combine scanned files, for maximum productivity. The innovative **Search and Index feature** provides sophisticated tools that enable you to retrieve archived documents with incredible simplicity.

### Integrated Super G3 Fax and Internet Fax

Add powerful facsimile capability to your MX Color Series with the optional Super G3 fax module, which offers advanced features such as automatic stapled/copied receptions and Inbound Fax Routing to e-mail. Sharp's innovative **PC fax driver** enables users to send fax documents right from their desktop. For Internet fax operation, add the optional B&W Internet Fax expansion kit.



*Intuitive desktop display features thumbnail viewing and file search allows searching by file name, keyword, or thumbnail.*

\* Some features require optional equipment.



## GET MORE OUT OF NETWORK APPLICATIONS



### Sharp OSA® technology at a glance

- Automate tasks and save time with seamless integration between the MX-4100N/4101N/5001N and network applications
- Centralized applications minimize set-up and installation on multiple Sharp products
- Virtually eliminates repetitive tasks and streamlines workflow, increasing efficiency
- Maximize your return on investment with tighter integration among IT assets
- Industry standard programming leads to faster deployment of new solutions



"Best Development Platform-  
Sharp OSA™ Technology"  
Award 2008

To help streamline document workflow and enhance productivity, the new MX-4100N/4101N/5001N support the Sharp OSA platform

### Versatile Application Integration

The MX-4100N/4101N/5001N document systems provide powerful functionality for your business so you can immediately leverage your previous investments in data management infrastructure.\* While others are limited to a small circle of productivity, Sharp's newest innovation, the Sharp OSA development platform, allows users to leverage the power of their back-end systems right from the control panel. It's really a new way of thinking with "power at the panel" for automation of tasks and a streamlined workflow.

### Save Time, Increase Efficiency

You'll save time and increase the efficiency of everyday tasks with Sharp OSA technology because it can be virtually seamless to the user. Any MX-4100N/4101N/5001N anywhere in the organization can display choices that were once only available on a desktop PC. With one-touch access to business applications via Sharp OSA integration, you can start and finish a document distribution task without worry.

### Complement Your Infrastructure

The Sharp OSA development platform is the logical choice as a complement to your existing infrastructure because the MX-4100N/4101N/5001N becomes the gateway to providing fast, flexible access to documents and applications...no matter where you are in the office. You also get the controlled access and tracking ability you require with tighter integration capabilities for network security and accounting applications. With such comprehensive control, you'll be able to manage your document workflow easily, efficiently, and more securely.

### Customized Technology

Sharp OSA technology also provides customization. With the ability to personalize applications and processes specific to your business, Sharp OSA technology can help eliminate redundancy and streamline workflow, helping to save time and optimize productivity. And since Sharp OSA technology utilizes industry-standard network protocols such as SOAP, XML, and XHTML, third party software developers can deliver customized solutions to your business faster than ever.

\* Some features require optional equipment.





## ADVANCED DEVICE MANAGEMENT



Printer Administration Utility

Engineered with you in mind, the MX-4100N/4101N/5001N combines easy-to-use integrated software with robust capabilities

### The Sharp Administration Utility Suite

Sharp's Administration Utility Suite takes management of your MX-4100N/4101N/5001N to the next level. This easy-to-use software allows you to take control of the versatile system features and simplifies installation and management.

- With **Printer Status Monitor**, network users can view printer conditions, check paper levels, toner, and more—all through an easy-to-use interface.
- With Sharp's advanced **Printer Administration Utility**, administrators can easily manage the setup, configuration, device settings, cloning and more! New advanced features such as **Remote Front Panel** allow administrators and support personnel to view and control the LCD panel of the machine remotely from any PC on the network!\* Plus, with event-driven, real-time service alerts, administrators and supervisors can achieve higher productivity. Now, it is easier than ever to view service logs, click counts, history reports and more.
- Experience the convenience of an **Embedded Web Page** right from your desktop! This advanced web-based management tool allows users to create and manage their own network scanning destinations, profiles and web-links. Administrators can access device settings, color control, account information and security settings.



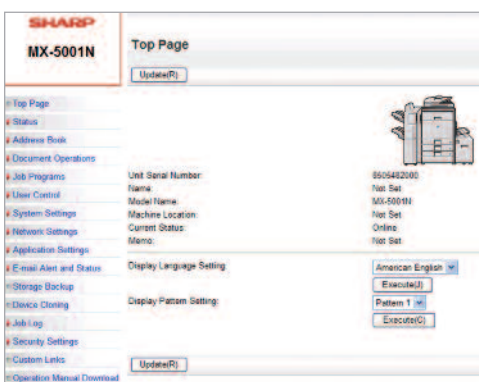
Remote Front Panel

### Take Charge of Color Usage and Costs

With Sharp's **device management system**, administrators and supervisors can define user groups on the MX to manage and restrict features, such as color copying, scanning or printing. Easily set up a custom user group to manage page counts (copy, print, scan or fax operations) for both color and B&W. The MX-4100N/4101N/5001N can store **profiles for up to 1000 users**. Now, it is easier than ever to manage the costs of color imaging!

### 24/7 Training with My Sharp

Managing all of the advanced features of your Sharp product is simple and easy. Ask your Authorized Sharp Dealer about **My Sharp**. This dedicated customer training website is customized to your MX-4100N/4101N/5001N and allows you to locate resources and find information specific to your configuration, truly helping you maximize your investment.



Embedded Web Page



\* Some features require optional equipment.



"Most Secure MFP  
Range" Award—5th  
Consecutive Year

## PRIVACY AUTHORIZATION INFORMATION CONFIDENTIALITY PROTECTION

### Innovative document and device protection helps ensure confidentiality

To help protect your data, the MX-4100N/4101N/5001N Series offers several layers of security, making Sharp the optimum choice to protect employee privacy and intellectual property. As the leader in office equipment security, Sharp makes it easy for any business or government entity to safely deploy digital copying, printing, scanning and faxing.



#### **Authority Groups and Access Control**

Advanced account management enables administrators to set authority groups for access to features of the MX-4100N/4101N/5001N Series. Administrators can control which department, for instance, has full access to color copying, printing, scanning and/or fax. Walk up users enter a code, Local Name and Password, or LDAP User Authentication to access their features assigned to their group. Users can also login utilizing a human interface device (HID) such as a Smartcard or Common Access Card (CAC).\*



#### **Data Erase and Encryption\***

To help protect your data, the MX-4100N/4101N/5001N Series offers an optional data security kit that encrypts document data using **AES** (Advanced Encryption Standard) **encryption**. Additionally, the data security kit erases the temporary memory on the hard drive by overwriting the encrypted data up to seven times, offering an unprecedented level of assurance. Additionally, the data security kits for these models comply to the new IEEE-2600-2008 security standard for MFP devices. This new standard specifies security requirements and provides a new international reference to assess contemporary MFP security.



#### **Network Scanning Access**

To help protect your network from unauthorized e-mail communications, the MX-4100N/MX-4101N/MX-5001N Series supports **User Authentication**, requiring users to login before performing any network scanning operations.



#### **Control Device Access Over the Network**

To help restrict access to the device over the network, the MX-4100N/4101N/5001N Series offers IPsec, SMB and extended support for **SSL Encryption** (Secure Sockets Layer), **IP/MAC address filtering**, IEEE 802.1x authentication, protocol enable/disable and port management for maximum security.



#### **Documents Remain Confidential**

To help protect your printed documents from unauthorized viewing, the MX-4100N/4101N/5001N Series offers encrypted PDF files for printing and scanning as well as **Confidential Printing** that requires users to enter a PIN code in order to print a queued document. Additionally, **Secure Fax Release** ensures received fax documents are held in memory until an authorized user enters a PIN code. So compliance with healthcare regulations such as HIPAA is easier.



#### **Tracking and Auditing Information**

Legislation and industry policies require companies to be more aware of information flow from their offices. Sharp offers both built-in and additional hardware/software which allows users to control, access and track usage of each device on the network.

These scalable security offerings aim to protect your intellectual property, preserve confidential information and help your business to meet regulatory requirements, such as the Health Insurance Portability and Accountability Act (HIPAA), and the Gramm Leach Bliley Act (GLB). For additional information visit: [www.sharppusa.com/security](http://www.sharppusa.com/security)

\* Some features require optional equipment.



## ENVIRONMENTALLY FRIENDLY



### Sharp's ongoing commitment and dedication to developing eco-friendly document systems set a high standard for the industry

#### Designed with a Strong Commitment to Protecting the Environment

The MX-4100N/4101N/5001N document systems utilize Sharp's second generation micro-fine toner technology, which offers a lower consumption rate than conventional toners. This also results in less packaging material and longer replacement intervals. Additionally, all Sharp supplies are packaged using fully recyclable materials. Power consumption on the MX-4100N/4101N/5001N is among the lowest in the industry and supports two different energy saving modes to reduce or shut off power after a set interval. All Sharp document systems belong to the EnergyStar® program, and RoHS program.

#### An Economical, Low Maintenance Color Document System That Makes Sense

The MX-4100N/4101N/5001N are designed to accommodate both large and small office environments. With a compact wingless design, the footprint of each base model is less than 25" x 27". Our new long-life consumable parts and supplies minimize service intervals and down time, resulting in lower operating costs.

#### Sharp's Environmental Leadership

Reinforcing our commitment to the environment, in 2007, Sharp received the *Excellence in Partnership Green Contractor Award* and the **Evergreen Award** from the U.S. Government's General Services Administration and the Coalition for Government Procurement.

The Green Contractor Award recognizes contractors that have made the best overall commitment to the environment by offering environmentally friendly products and services or adhering to environmentally sound manufacturing procedures.

The Evergreen Award identifies environmentally-friendly businesses and their efforts in recycling and waste reduction practices. Please visit [www.sharppusa.com/environment](http://www.sharppusa.com/environment) to learn more about our environmental leadership.

#### Toner Recycling Program

As part of our commitment to preserving the environment, Sharp offers customers a toner recycling program for all Sharp copiers and MFP products. Sharp encourages customers to recycle their used toner cartridges by providing a pre-paid shipping label for their return to our facility. Please visit [www.sharppusa.com/recycle](http://www.sharppusa.com/recycle) to learn more.

# MX-4100N/4101N/5001N SPECIFICATIONS

## Main Specifications

|                                  |  |          |          |          |       |
|----------------------------------|--|----------|----------|----------|-------|
| <b>MX-4100N/4101N/5001N</b>      | Includes multi-tasking controller, 80 GB HDD with document filing system, PCL6 network printing/scanning, 100-sheet RSPF (MX-4100N), 150-sheet DSPP (MX-4101N/5001N) auto-duplex, two 500-sheet paper drawers, 100-sheet bypass. Developer is included in the box.   |          |          |          |       |
| <b>Type</b>                      | Color multi-function digital document system   |          |          |          |       |
| <b>Functions</b>                 | Copy, print, network print, network scan, document filing and fax <sup>1</sup>   |          |          |          |       |
| <b>Copy System</b>               | Dry electrostatic transfer/Dual component developer/Magnetic brush development/OPC drums/Heat Roller fusing/Xenon lamp exposure  |          |          |          |       |
| <b>Originals</b>                 | Sheets and bound documents   |          |          |          |       |
| <b>Max Original Size</b>         | 11" x 17"  |          |          |          |       |
| <b>Copy Size</b>                 | Min. 5 1/2" x 8 1/2", Max. 11" x 17" (12" x 18" bypass tray)   |          |          |          |       |
| <b>Copy Speed</b>                | MX-4100N/4101N: 41 ppm B&W/Color (8 1/2" x 11")<br>MX-5001N 50 ppm B&W/Color (8 1/2" x 11")  |          |          |          |       |
| <b>Multiple Copy</b>             | Max. 999 copies  |          |          |          |       |
| <b>First Copy Time (Seconds)</b> |  | MX-4100N | MX-4101N | MX-5001N |       |
|                                  |  | Black    | Color    | Black    | Color |
|                                  | Platen Glass   | 4.7      | 6.7      | 4.7      | 6.7   |
|                                  | Doc. Feeder  | 10.1     | 13.5     | 9.5      | 15.2  |
| <b>Warm Up Time</b>              | MX-4100N/4101N: 120 sec. or less; MX-5001N: 140 sec. or less   |          |          |          |       |
| <b>Magnification</b>             | 25% to 400% in 1% increments (RSPF/DSPP 25%-200%)  |          |          |          |       |
| <b>Original Feed</b>             | MX-4100N: 100-sheet RSPF with original size detection<br>MX-4101N/5001N: 150-sheet DSPP with original size detection   |          |          |          |       |
| <b>Scan Speed</b>                | RSPF Copy: Up to 50 IPM (Black) @ 600 x 400 dpi; 36 IPM (color) @ 600 x 600 dpi / DSPP Copy: Up to 70 IPM (black) @ 600 x 300 dpi; 41 IPM (color) @ 600 x 600 dpi. RSPF Scan: Up to 50 IPM @ 200 x 200 dpi / DSPP Scan: Up to 70 IPM @ 200 x 200 dpi.  |          |          |          |       |
| <b>Original Sizes</b>            | 5 1/2" x 8 1/2", 8 1/2" x 11", 8 1/2" x 11" R, 8 1/2" x 14", 11" x 17" (13-32 lb. bond)  |          |          |          |       |
| <b>Paper Feed System</b>         | Standard: (2) 500-sheet drawers (letter/legal/ledger/statement) and 100-sheet bypass tray (letter/legal/ledger/statement/envelope). <sup>2</sup><br>Optional: (1) 500-sheet paper drawer (letter/legal/ledger/statement size) or (2) 500-sheet paper drawers (letter/legal/ledger/statement size) and 3500-sheet large capacity tray (letter size).  |          |          |          |       |
| <b>Paper Types</b>               | Paper drawers: 16 lb. bond -110 lb. index, large capacity tray: 16-28 lb. bond. Other paper types include plain, pre-printed, recycled, pre-punched, letterhead and color paper. Bypass Tray: 16-28 lb. bond (plain paper), 13-16 lb. bond (thin paper), 110-140 lb. index (heavy paper), 20-24 lb. bond (Monarch/Com-10 envelope), tab paper (letter size only). Other types include label paper, gloss paper, pre-printed, recycled, pre-punched, letterhead, color paper and OHP film.  |          |          |          |       |
| <b>Duplexing</b>                 | Standard automatic duplex copying and printing   |          |          |          |       |
| <b>CPU</b>                       | Power QUICCIII-MPC8533E (800MHz)   |          |          |          |       |
| <b>Interface</b>                 | RJ-45 Ethernet (10/100/1000Base-T), USB 2.0 (host port), USB 2.0 (device port)   |          |          |          |       |
| <b>Memory</b>                    | Standard 512 MB (copier); 1 GB (printer/network scanning) memory   |          |          |          |       |
| <b>Hard Disk Drive</b>           | 80 GB; 38GB for document filing system and electronic sorting  |          |          |          |       |
| <b>Copy Resolution</b>           | Scan: B&W/color: 600 DPI; Copy Output: B&W/color: 600 DPI  |          |          |          |       |
| <b>Color modes</b>               | Auto Color Control (ACS), Full Color, Mono, 2 Color, Single Color  |          |          |          |       |
| <b>Exposure Control</b>          | Modes: Automatic text, Text/Photo, Text/Printed/Photo, Printed-Photo, Photo, Map, Light Original, Pale-Color document. Settings: auto or 9 step manual.  |          |          |          |       |
| <b>Halftone</b>                  | 256 gradations/2 levels (monochrome)   |          |          |          |       |
| <b>Copy Features</b>             | Scan-Once Print-Many, electronic sorting, offset-stacking, Auto Color Sensing (ACS), Auto Paper Sensing (APS), Auto Magnification Sensing (AMS), auto tray switching, rotation copy, reserve copy, tandem copy, book copy, margin shift, tab-paper insertion, edge erase, center erase, dual page copy, cover pages, insert pages, OHP insertion, job build, card shot, multi-page enlargement, reverse image, black-white reversal, centering, proof copy, 2-in-1/4-in-1, pamphlet, photo repeat, document filing, account management, job programs, date/character/page stamp (color). |          |          |          |       |
| <b>Account Control</b>           | Up to 1000 users. Supports user-number authentication (on device), login name/password (on device) or login name/password (on device via LDAP server) for Copy, Print, Scan, Fax and document management.  |          |          |          |       |
| <b>Output Tray Capacity</b>      | Main output tray (top) 500 sheets (face down); optional exit tray (right 1 side) 100 sheets (face down)  |          |          |          |       |
| <b>Firmware</b>                  | Flash ROM with local (USB) and network update capability.  |          |          |          |       |
| <b>Configuration</b>             | Web-based management system with user/administrator level login security, cloning (1 to N) with PAU and remote front panel access  |          |          |          |       |
| <b>Method</b>                    | Remote front panel access, remote access to service logs and click counts  |          |          |          |       |
| <b>Service/Maintenance</b>       | Power AC 100-127 VAC, 60 Hz, 12 Amps/16 Amps (MX-5001N)  |          |          |          |       |
| <b>Power consumption</b>         | MX-5001N: Maximum 1920 W or less<br>MX-4100N/4101N: Maximum 1524W or less  |          |          |          |       |
| <b>Weight</b>                    | MX-5001N/4101N: Approx. 283 lbs. (DSPP Base Model)<br>MX-4100N: Approx. 263 lbs. (RSPF Base Model)   |          |          |          |       |
| <b>Dimensions</b>                | MX-4100N: 25 1/2" x 27 1/8" x 37 1/2"<br>MX-5001N/4101N: 25 1/2" x 27 1/8" x 38"   |          |          |          |       |

## Network Printing System (standard)

|                           |   |
|---------------------------|---|
| <b>PDF</b>                | PCL 6/PCL5c compatible, optional Postscript® 3™, optional XPS   |
| <b>Resolution</b>         | 1200 dpi x 1200 dpi   |
| <b>Print Speed</b>        | 41/50 pages per minute (8 1/2" x 11")   |
| <b>Print Drivers</b>      | Windows® 98, Windows Me, Windows NT® 4 (with SP5 or later), Windows 2000, Windows Server® 2003, Windows Server 2008, Windows XP, Windows XP x64, Windows Server x64, Windows Vista™, Windows Vista x64, MAC OS®, 9.2.2, OS X (including 10.2.8, 10.3.9, 10.4.11, 10.5-10.5.1), all MAC PPD  |
| <b>Features</b>           | Continuous printing, duplex printing, pamphlet printing, N-up printing, image rotation, different cover page/last page, transparency inserts, tab printing, carbon copy print mode, fit-to-page, poster print, margin shift, mirror image, watermarks, overlay, confidential print, confidential batch print, print hold, proof print, bypass printing, job priority printing, print job control, tandem printing and direct printing (Note: some features not available on certain print drivers). |
| <b>Direct Printing</b>    | File types: TIF, JPEG, GPC, PRL, TXT, PDF, Encrypted PDF, High Compression PDF, Postscript and XPS <sup>1</sup> Methods: FTP, Web page, E-mail and USB memory   |
| <b>Resident Fonts</b>     | 80 outline fonts  |
| <b>Interface</b>          | RJ-45 Ethernet 10/100/1000 Base-T   |
| <b>Operating Systems</b>  | Windows 98/ME, NT 4.0, XP, 2003/2008 Server, Vista, Novell® Netware® 3x, 4x, 5x, MAC OS 9, OS X (including 10.5.1), Sun® OS 4.1x, Solaris® 2x, Unix®, Linux® and Citrix® (Metaframe, Presentation Server 4, 4.5) and Windows Terminal Services.   |
| <b>Network Protocols</b>  | TCP/IP (IPv4, IPv6, IPSEC) SSL (HTTP, IPP, FTP), SNMPv3, 802.1x for Windows and Unix. LPD and LPR for UNIX. IPX/SPX® (Novell environments). EtherTalk® and NetBEUI. AppleTalk® for Macintosh® environments.   |
| <b>Printing Protocols</b> | LPR, IPP, IPPS, PAP, Raw TCP (port 9100), FTP and Novell Pserver/Printer  |
| <b>Network Security</b>   | IP/Mac address filtering, protocol filtering, port management, user authentication and document administration.   |
| <b>Security Standards</b> | IEEE-2600-2008, DoD (NSTISSP) #11, DoD Directive 8500.2, DoD (DISA) <sup>1</sup>  |

## Network Scanning System (standard)

|                               |  |
|-------------------------------|--|
| <b>Max Original Size</b>      | 11" x 17"  |
| <b>Optical Resolution</b>     | 600 DPI  |
| <b>Output Modes</b>           | 600 dpi, 400 dpi, 300 dpi, 200 dpi, 100 dpi  |
| <b>Scan Modes</b>             | Color, monochrome, grayscale   |
| <b>Image Formats</b>          | Monochrome: TIF, PDF, Encrypted PDF, XPS<br>Color: Grayscale, Color TIF, JPEG, PDF, Encrypted PDF, High Compression PDF, XPS <sup>1</sup>  |
| <b>Image Compression</b>      | Monochrome Scanning: Uncompressed, G3 (MH), G4 (MR/MMR)<br>Color/Grayscale: JPEG (high, middle, low)<br>Internet Fax mode: MH/MMR (option) |
| <b>Scan Destinations</b>      | E-mail, Desktop, FTP, Folder (SMB), USB, Internet/G3 fax (options)   |
| <b>One-touch Destinations</b> | Up to 999 (combined scan destinations)   |
| <b>Group Destinations</b>     | Up to 500  |
| <b>Programs</b>               | 48 (combined)  |
| <b>Max. Jobs in Memory</b>    | Up to 94   |
| <b>Network Protocols</b>      | TCP/IP and SSL (includes HTTP, SMTP, LDAP, FTP, POP3), SMB, ESMTIP, 802.1x   |
| <b>Network Security</b>       | E-mail server user authentication for LDAP and Active Directory  |
| <b>Software</b>               | Sharpdesk® desktop document management software (1 user license)   |

## B&W Super G3 Fax Kit (option)

|                                 |   |
|---------------------------------|---|
| <b>Transmission mode</b>        | Super G3, G3  |
| <b>Modem Speed</b>              | 33.6 KBPS <sup>1</sup>  |
| <b>Compression Methods</b>      | JBIG, MMR, MR, MH   |
| <b>Scanning Method</b>          | Sheet fed simplex or duplex or book   |
| <b>Max. Transmit Resolution</b> | 400 DPI   |
| <b>Transmit Speed</b>           | Approximately 2 Seconds with Super G3/JBIG <sup>4</sup>   |
| <b>Auto Dialing</b>             | Up to 999 (combined scan destinations)  |
| <b>Group</b>                    | Up to 500   |
| <b>Dial/Destinations</b>        |   |
| <b>Inbound Fax Routing</b>      | Forwards received fax data to E-mail  |
| <b>Long length Originals</b>    | Up to 31.5" (for transmission)  |
| <b>Programs</b>                 | 48 (combined)   |
| <b>Memory</b>                   | 8 (exclusive)   |
| <b>Halftone</b>                 | 256 levels  |
| <b>Features</b>                 | Quick on-line transmission, direct transmission, F-Code transmission/reception, rotate transmission, anti-junk fax reception, automatically staple received faxes, secure fax release, out of paper memory reception, auto redial, 2-in-1 reception, duplex reception transaction reports, activity reports and PC fax. |

## Inner Finisher (option)

|                           |  |
|---------------------------|--|
| <b>Type</b>               | Built-in finisher (hole-punch unit option)   |
| <b>Output Capacity</b>    | 500 sheets (letter/statement) or 250 sheets (ledger/legal size)  |
| <b>Stapling Media</b>     | Plain paper, (letter, legal, or ledger size)   |
| <b>Stapling Positions</b> | 1 front, 1 rear, or both   |
| <b>Power Source</b>       | Supplied from main unit  |
| <b>Stapling</b>           | Up to 50 sheets (letter size) or 30 sheets (legal, ledger or mixed)                                    |
| <b>Stapled Sets</b>       | 30 bundles or 500 sheets (letter or statement size) or 30 bundles or 250 sheets (legal or ledger size) |
| <b>Hole Punching</b>      | Optional hole punch unit MX-PNX1B (2 holes/3 holes)  |
| <b>Weight</b>             | Approx. 28.7 lbs.  |
| <b>Dimensions</b>         | 25.2" (w) x 28.94" (d) x 8.1" (h) (includes extended tray)   |

## Saddle Stitch Finisher (option)

|                               |   |
|-------------------------------|---|
| <b>Type</b>                   | Console finisher with dual exit trays (mounts on left side of host machine)                     |
| <b>Output Trays</b>           | Upper tray: Offset stack tray<br>Lower tray: Book tray for saddle stitch                        |
| <b>Output Capacity</b>        | 1000 sheets (letter/statement size) or 500 sheets (legal, ledger or letter-R size)              |
| <b>Stapling</b>               | Up to 50 sheets (letter/statement) or 25 sheets (legal, ledger or mixed)                        |
| <b>Output Delivery</b>        | Face down   |
| <b>Stapling Media</b>         | Plain paper, letter/legal/ledger size or mixed  |
| <b>Stapling Positions</b>     | 1 front, 1 rear, or both  |
| <b>Saddle Stitch Function</b> | Center stitch/center folding (2 staples) letter/legal/ledger paper sizes                        |
| <b>Saddle Stitch</b>          | Up to 10 sets (11-15 sheets per set)/15 sets (6-10 sheets per set)/20 sets (1-5 sheets per set) |
| <b>Max. Sets</b>              |   |
| <b>Power Consumption</b>      | 70 W or less  |
| <b>Hole Punching</b>          | Optional hole punch unit MX-PNX5B (2 holes/3 holes)   |
| <b>Weight</b>                 | Approx. 88.18 lbs.  |
| <b>Dimensions</b>             | 25.83" (w) x 24.84" (d) x 38.9" (h) (with tray extended)  |

## 4K Stacking Finisher

|                          |  |
|--------------------------|--|
| <b>Type</b>              | Console stacking finisher with dual exit trays   |
| <b>Output Trays</b>      | Fixed position upper tray and offset stacking lower tray   |
| <b>Output Capacity</b>   | Upper tray: 1,550 sheets (letter size, non-stapled)<br>Lower tray: 2,450 sheets (letter size, non-stapled) |
| <b>Stapling</b>          | Three position; Up to 50 sheets (letter size)  |
| <b>Hole punching</b>     | Optional punch unit MX-PNX6B (2 hole/3 hole)   |
| <b>Power Consumption</b> | Approx. 140W   |
| <b>Weight</b>            | Approx. 97 lbs.  |
| <b>Dimensions</b>        | Approx. 20 1/2" x 25 1/2" x 43 1/2"  |

## Optional Equipment

|                     |   |
|---------------------|---|
| <b>MX-DEX8</b>      | Stand/1 x 500 Sheet Paper Drawer                  |
| <b>MX-DEX9</b>      | Stand/2 x 500 Sheet Paper Drawer                  |
| <b>MX-50ABD</b>     | Rolling Cabinet Base                              |
| <b>MX-LCX1</b>      | Large Capacity Tray (requires MX-DEX8 or MX-DEX9) |
| <b>MX-FNX9</b>      | Inner Finisher                                    |
| <b>MX-FN10</b>      | Saddle Stitch Finisher                            |
| <b>MX-FN11</b>      | 4K Stacking Finisher                              |
| <b>MX-RBX3</b>      | Paper Pass Unit (Required for MX-FN10 or MX-FN11) |
| <b>MX-PNX1B</b>     | 3 Hole Punch Unit (for Inner Finisher)            |
| <b>MX-PNX5B</b>     | 3 Hole Punch (for Saddle Stitch Finisher)         |
| <b>MX-PNX6B</b>     | Punch Unit (for 4K Stacking Finisher)             |
| <b>MX-TRX2</b>      | Exit Tray Unit                                    |
| <b>MX-PKX1</b>      | Postscript 3 kit                                  |
| <b>MX-PUX1</b>      | XPS Expansion Kit (Requires MX-SHP1GBXPS)         |
| <b>MX-SHP1GBXPS</b> | 1GB Memory Upgrade (Required for MX-PUX1)         |
| <b>MX-EBX3</b>      | Enhanced Scanner Compression Kit                  |
| <b>MX-FWX1</b>      | Internet Fax kit                                  |
| <b>MX-FXX2</b>      | Fax Expansion Kit                                 |
| <b>AR-PF1</b>       | Bar Code Font kit                                 |
| <b>MX-AMX1</b>      | Application Integration Module                    |
| <b>MX-AMX2</b>      | Application Communication Module                  |
| <b>MX-AMX3</b>      | External Accounting Module                        |
| <b>MX-FR11U</b>     | Data Security Kit (commercial version)            |

## Supplies

|                  |                               |
|------------------|-------------------------------|
| <b>MX-50NTBA</b> | Black Toner Cartridge         |
| <b>MX-31NTCA</b> | Cyan Toner Cartridge          |
| <b>MX-31NTMA</b> | Magenta Toner Cartridge       |
| <b>MX-31NTYA</b> | Yellow Toner Cartridge        |
| <b>MX-31NVBA</b> | Black Developer               |
| <b>MX-31NVSA</b> | Cyan/Magenta/Yellow Developer |
| <b>MX-31NRSA</b> | Drum                          |

<sup>1</sup> Some features require optional equipment.

<sup>2</sup> Paper capacity is based on letter size paper.

<sup>3</sup> Actual transmission time will vary based on line conditions.

<sup>4</sup> Based on Sharp Standard Test Chart with approximately 700 characters, letter size in standard resolution.



SHARP ELECTRONICS CORPORATION  
Sharp Plaza, Mahwah, NJ 07495-1163  
1-800-BE-SHARP • www.sharpusa.com

Design and Specifications subject to change without notice. Sharp, Sharp OSA, Sharpdesk, My Sharp and all related trademarks are trademarks or registered trademarks of Sharp Corporation and/or its affiliated companies. Windows, Windows NT, Windows Server and Windows Vista are trademarks or registered trademarks of Microsoft Corporation. All other trademarks are the property of their respective owners.