



## SAMSUNG Colour Laser Printer CLP-620ND

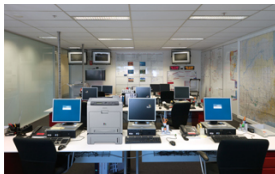
Enhanced Specification  
Power Save Mode  
Smooth Network Integration  
SAMSUNG's Real-Time Calibration Technology



SAMSUNG's focus on high specification and quality colour prints has shaped the development of this compact and durable printer at 20 print per minute for both mono and colour.

When your business demands high levels of performance - without the large price tag - the SAMSUNG CLP-620ND is an ideal option.

The SAMSUNG CLP-620ND offers consistently outstanding colour prints and minimises operational costs.



### Enhanced Specification

With a 360MHz CPU and a generous 256MB memory, the SAMSUNG CLP-620ND range makes print jobs easy to process, store and handle.

The added features and processing power mean it's suitable for the most demanding office environment.

### Power Save Mode



Reduces the cost of printing and lowers the temperature of the machine, creating a more durable environment for the printer components. Less wear and tear means extended quality and fewer replacement parts needed.

### Smooth Network Integration

Conveniently network ready the SAMSUNG CLP-620ND is easy to integrate into your IT infrastructure right from the box. They also include support for the next generation Internet protocol (IPv6), giving you assured integration capability with IT networks of the future.

### SAMSUNG's Real-Time Calibration Technology



SAMSUNG's Real-Time Calibration Technology ensures documents are printed to a consistently high colour quality. However, when dealing with important documents that require special attention, users can choose to manually define the colour quality that will appear on their documents.

### Easy to Maintain

The SAMSUNG CLP-620ND range also offers a choice of consumables to meet your cash flow needs. High yield toner cartridges, which are ideal for heavy users, last longer and give you lower costs per page. Optionally, low yield toner cartridges have the advantage of a lower initial outlay.

## Blue Compass Navigation



SAMSUNG's unique Blue Compass Navigation is easy to learn and even easier to use, so you can be more productive, more quickly.

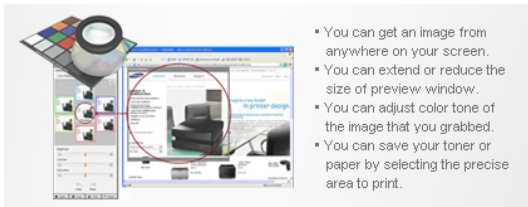
The navigation array gives you instant access to all the different print functions and controls. Simple, intuitive menus and buttons add to the savings in training and troubleshooting time. User-friendly GUI screens make operations quick and easy, and printer control panels have everything covered, including job status, toner level, paper empty and cover open alerts.

## High Resolution



Communication is key in any business. Colour Print quality can make your company stand out. The SAMSUNG CLP-620ND / 670N / 670ND range excels in its printing capability by featuring a resolution level of 9600x600dpi and high glossiness level, providing you with consistent professional documents.

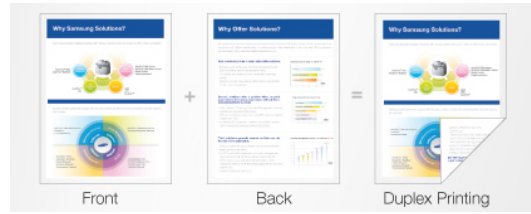
## SAMSUNG Easy Colour Manager



- You can get an image from anywhere on your screen.
- You can extend or reduce the size of preview window.
- You can adjust color tone of the image that you grabbed.
- You can save your toner or paper by selecting the precise area to print.

Easy Colour Manager allows users to easily adjust colour balance, brightness, contrast and saturation of any image that you view on your monitor. It can be especially useful if you have specific colour preferences, or if your company has its own brand requirements.

## Duplex Printing



The SAMSUNG CLP-620ND includes SAMSUNG's Duplex technology, allowing for efficient and economical printing.

## Paper Handling



Storage of 250 sheets of paper at one time as well as 100 sheet Multipurpose Tray. This means less time is spent filling paper trays and with the variety of available paper formats – from A6 to Legal – you're always ready to print.

<b>Overview</b>	<b>Function</b>	Color Print
<b>Print</b>	<b>First Print Out Time (Mono)</b>	25 seconds
	<b>First Print Out Time (Colour)</b>	25 seconds
	<b>Resolution</b>	Up to 9600 x 600dpi effective output
	<b>Emulation</b>	PCL5c, PCL 6, SPL-C
	<b>Duplex</b>	Built-in

<b>Paper Handling</b>	<b>Input Capacity and Types</b>	250-sheet Cassette, 100-sheet Multi-Purpose Tray
	<b>Output Capacity and Types</b>	200-sheet Face Down
	<b>Media Size</b>	76 x 127mm (3" x 5") ~ 216 x 356mm (8.5" x 14")
	<b>Media Type</b>	Envelopes, Labels, Card Stock, Bond, Archive
<b>General</b>	<b>Processor</b>	SAMSUNG CHORUS3 360MHz
	<b>Memory / Storage</b>	256MB (Max. 512MB)
	<b>OS Compatibility</b>	Windows 2000 / XP / 2003 / Vista / Windows 7, Windows server 2008 R2, Various Linux OS including Red Hat 8.0 ~ 9.0, Mandrake 9.2 ~ 10.1, SuSE 8.2 ~ 9.2 and Fedora Core 1 ~ 4, Mac OS X 10.3 ~ 10.6, Citrix Presentation Server, Windows Terminal Services
	<b>Interface</b>	USB 2.0, Ethernet 10 / 100 Base TX
	<b>Noise Level</b>	Less than 51dBA (Color printing & B/W printing) Less than 35dBA (Standby)
	<b>Dimension (W x D x H)</b>	441.5 x 431 x 425mm (17.4" x 17" x 16.7")
	<b>Weight</b>	27kg (59.52lbs)
	<b>Consumables</b>	<b>Black Toner Cartridge</b>
<b>Yellow/Magenta/Cyan Toner Cartridge</b>		Average Continuous Yellow / Magenta / Cyan Cartridge Yield- High Yield: 4000 standard pages- Standard Yield: 2000 standard pages (ships with 2000 pages standard Toner Cartridge)
<b>Imaging Unit</b>		N/A
<b>Waste Toner Container</b>		N/A

Features and specifications are subject to change without prior notification.